



IN ADMIRATION OF MUSIC



D A L I O P T I C O N

T H E *Art* O F S O U N D



IN ADMIRATION OF MUSIC

T H E *Art* O F S O U N D

From the visceral savagery of the Sex Pistols to the virtuosity of Vivaldi, music is art and the players the painters who pluck their notes from the palette of emotion. Just as art is subjective, so is music, and tastes and tones vary wildly from the raw and under-produced to the painstakingly prepared.


Because of this, we at DALI don't create loudspeakers that endear themselves to any specific musical genre, but rather loudspeakers that celebrate music in all its forms – making music is art, and for us crafting a loudspeaker that will do it justice is our part in perfecting that art.

PASSION TO PERFORM

Driven by a raw passion for music and its honest reproduction in the home, the development and refinement of new technologies that will enhance the home entertainment experience is the main objective in our quest to create the best loudspeakers in the world.

This has been our ethos for over 30 years and has resulted in loudspeakers that delight the eye and elate the ear; and for 2015 we bring you the latest step in our evolution: DALI OPTICON.

To launch our OPTICON range, the Hospital Club in London played host to three acts we believe share the OPTICON audio ethic, each offering the pitch-perfect, unwavering attention to every nuance of sound and endless originality that was the engineering ethos behind this revolutionary range. In short: the Art of Sound.



“ DALI LOUDSPEAKERS ARE
DESIGNED, DEVELOPED AND
PRODUCED IN ADMIRATION
OF **MUSIC**. ”

Lars Worre
CEO, DALI A/S, Denmark

DALI OPTICON SERIES

W E L C O M E T O D A L I



I O P T I C O N

Combining the clean, cutting-edge lines of Danish design with both tried-and-tested and new technologies, the DALI OPTICON is a seven-strong range of speakers consisting of the OPTICON 1, 2, 5, 6, 8, LCR and VOKAL. Available in silk matte white, black and walnut finishes and with high-gloss white or black front baffle, all models feature DALI's own unerringly accurate woofer and tweeter modules, plus the proprietary SMC pole piece.

Striking sound that can both soar and soothe is at the heart of the DALI OPTICON range, alongside purity of image at any volume.

As our CEO Lars Worre puts it, these are loudspeakers created from the ground up in admiration of music, and when you hear them, we're confident you'll understand exactly what we mean.



DALI HERITAGE & CRAFTSMANSHIP

As famed for our innovation and invention as our cutting-edge design, it was a Dane by the name of Valdemar Poulsen who started the whole home audio ball rolling way back in 1898 when he invented the first ever device capable of recording sound magnetically. His 'wire recorder' paved the way for sound recording as we know it today and also created the need for something to play those recordings back. The race for the loudspeaker was on.

Moving on 17 years to 1915, another Danish inventor Peter L. Jensen chose Christmas Eve to demonstrate the world's first loudspeaker to some 5000 people outside of San Francisco's City Hall. Broadcasting opera to the stunned crowd, Jensen instantly added his name to the audio history books but the loudspeaker's long journey had only just begun.

Rocketing forward to 1983, Danish Audiophile Loudspeaker Industries, or DALI, was formed by another great Dane in the annals of audio, Peter Lyngdorf. The demand for a higher quality of Hi-Fi was obvious and Peter met it head on four years after forming the company with the DALI 40 and DALI SE.

Over three decades of audio innovation later, DALI is as fresh and forward thinking as ever. To us the idea of standing still is as abhorrent as standing waves,

which is why every new product we develop contains the creative edge that has driven DALI to the top of the loudspeaker tree.

Driven by our passion for music and its honest reproduction in the domestic environment, the development and refinement of new technologies to increase the realism of the home entertainment experience is the main objective in our quest to create what we believe to be the best loudspeakers in the world.

The creation of a DALI loudspeaker is based on a wide range of technical parameters, which all contribute towards the ultimate goal: to design loudspeakers capable of enhancing the music and movie experience in your own living space.

All DALI loudspeakers are designed in strict accordance with our fundamental acoustic and electro-acoustic principles, which together bring the as-good-as-live music experience home.

Celebrating the 100th anniversary of Peter L. Jensen's loudspeaker launch the performance of our all-new OPTICON range is a prime example of just how far loudspeakers have progressed.

“ I STRONGLY ENCOURAGE PEOPLE
TO LISTEN TO OUR MUSIC ON
GOOD SPEAKERS OR THEY’LL MISS
A HUGE PART OF IT ”

JJ ROSA

FEATURED ARTIST

JJ ROSA - Straight out of Stockport and London-based, JJ Rosa’s soul-soaked voice recalls legendary R&B performers – from Chaka Khan to Lauryn Hill. More than just a beautiful voice, she’s also mastered the guitar – learning to play through her dad’s Jimi Hendrix records.



OPTICON 1



Proof that good things come in small packages, the DALI OPTICON 1 stand-mount speaker sports a compact cabinet that, despite its dimensions, holds almost five litres of air allowing for greater sympathetic resonance and enhancing the pitch-perfect power of this deceptively potent loudspeaker.

With the addition of a rear-mounted bass port, a 4¾-inch wood fibre low-loss woofer, a 26mm ultra-light Soft Dome tweeter and gold-plated terminals, the DALI OPTICON 1 delivers the perfect balance of clear, detailed midrange and taut bass that belies its size.



KEY SPECIFICATIONS

- DALI SMC Magnet System Technology
- Ultra compact stand-mount speaker
- 26mm ultra light soft dome tweeter
- 4¾-inch wood fibre low-loss woofer
- Gold-plated terminals

OPTICON 2

Bringing a little more muscle to the party, the DALI OPTICON 2 is our second compact stand-mount option that builds on the power of the OPTICON 1 with a sizeable 6½-inch wood-fibre, low-loss woofer and a 28mm ultra-light soft dome tweeter to make it even more powerful.

Exactly engineered to extract every last nuance from your music, the use of DALI's unique SMC (Soft Magnetic Compound) magnet motor system (originally developed for the EPICON range) means audio with minimal distortion thanks to the SMC's low-level electrical conductivity.

Available in striking silk matte white, black and walnut finishes and with high-gloss white or black front baffle, the OPTICON 2 is small in scale but big on performance.

KEY SPECIFICATIONS

- DALI SMC Magnet System Technology
- Compact stand-mount speaker
- 28mm ultra light soft dome tweeter
- 6½-inch wood fibre low-loss woofer
- Gold-plated terminals



“ WHERE WORDS FAIL,
MUSIC SPEAKS ”

Hans Christian Andersen



OPTICON 5

Setting the stands aside now, the DALI OPTICON 5 marks the start of our floor-standing models. A performance powerhouse thanks to the inclusion of our sensational 6½-inch wood fibre low-loss woofer working seamlessly with our hybrid tweeter. The Opticon 5 produces a transparent image that reflects the passion and energy of a live performance and a soundstage that extends across the entire room – both epic and intimate.

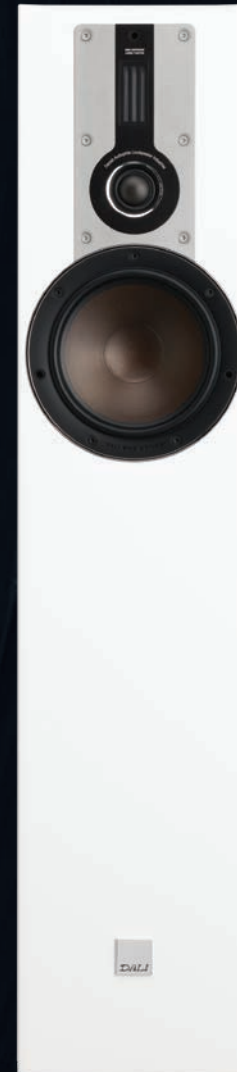


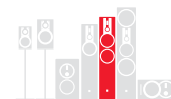
At just under 90cm in height, the OPTICON 5 doesn't dominate your room, but is still capable of filling even the largest of rooms with precise, detailed sound.

Complete with gold-plated bi-wiring terminals and in the OPTICON livery of silk matte white, black or walnut finishes and with high-gloss white or black front baffles, the DALI OPTICON 5 is the loudspeaker of choice for the audio enthusiast whose space is at a premium.

KEY SPECIFICATIONS

- DALI SMC Magnet System Technology
- Compact floor-standing speaker
- Hybrid tweeter module
- 6½-inch wood fibre low-loss woofer
- Gold-plated bi-wiring terminals





OPTICON 6

“ WHEN WE LISTEN TO GREAT MUSIC WE WANT TO BE ABLE TO HEAR EVERY DETAIL OF THE WHOLE PICTURE ”

BASIX

FEATURED ARTIST

Peter Bach, BASIX - With no fewer than four international CARA awards on their résumé, Danish vocal six-piece, BaSix, have proven themselves to be an a cappella group without parallel.



Standing a metre high, the DALI OPTICON 6 is a master of music that delivers thunderous bass, perfectly pitched mids and soaring high notes effortlessly.

Featuring twin 6½-inch wood fibre low-loss woofers complete with our unique SMC magnet motor system, ably assisted by a combined soft dome and ribbon tweeter, the OPTICON 6 delivers audio with the wow-factor.

Add in an extended internal volume to allow for bigger, even more imposing bass and an epically broad soundstage, plus gold-plated bi-wiring terminals, and the OPTICON 6 becomes the master of soul-moving music to the ears of those that demand more.

KEY SPECIFICATIONS

- DALI SMC Magnet System Technology
- Large floor-standing speaker
- Hybrid tweeter module
- 2 x 6½-inch wood fibre low-loss woofers
- Gold-plated bi-wiring terminals

OPTICON 8



Ramping things right up comes the pinnacle of the range: the OPTICON 8. A towering floor-stander blessed with the best in DALI's cutting-edge technology, if you want the ultimate in power and precision, the 8 is your answer.

With a generous cabinet, 2 x 8-inch wood fibre low-loss woofers joined by a 6½-inch wood fibre low-loss woofer and our soft dome/ribbon tweeter hybrid, the OPTICON 8 is capable of filling even the largest rooms with utterly immersive audio, enhancing the quality of any source and putting in a performance that will eke out even the subtlest sounds from a recording.

Featuring the same gold-plated bi-wiring terminals as the rest of the range, the OPTICON 8 delivers the perfect blend of deep bass and mid- and high-range perfection.

KEY SPECIFICATIONS

- DALI SMC Magnet System Technology
- Large floor-standing speaker
- Hybrid tweeter module
- 2 x 8-inch wood fibre low-loss woofers
- 1 x 6½-inch wood fibre low-loss woofer
- Gold-plated bi-wiring terminals



OPTICON LCR

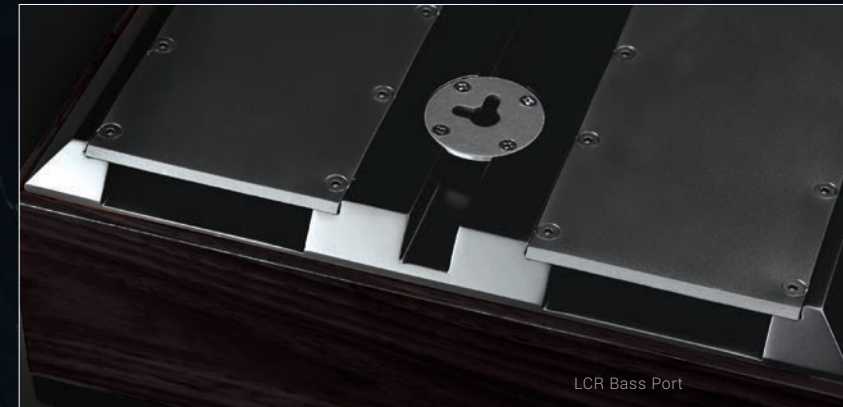


For us audio and innovation should always go hand-in-hand, which is why we created the OPTICON LCR – a wall-mount model that's second to none in terms of flexibility and performance.

Capable of operating as either an independent 2.0 system or as the centre channel in a larger set-up, the rotatable OPTICON LCR delivers its pristine audio via a 6½-inch wood-fibre low-loss woofer. Keeping it company is our hybrid tweeter module and, to top things off, an advanced bass port configuration built into the back panel that uses

the wall on which it's mounted to extend its acoustic properties. The result is truly astounding bass response, despite a compact cabinet, without the need for an additional subwoofer in your setup.

Whether you want one speaker on your wall to handle all of your audio needs, or a centre speaker to add that extra something to your surround system, the OPTICON LCR is the perfect solution.



KEY SPECIFICATIONS

- DALI SMC Magnet System Technology
- Wall-mount LCR speaker
- Rotatable hybrid tweeter module
- 6½-inch wood fibre low-loss woofer
- Downward pointing bass port
- Gold-plated terminals

OPTICON VOKAL



Completing both our OPTICON line up – and any serious home cinema sound system – the OPTICON VOKAL centre speaker presents the perfect harmony of power and control. Arguably the most important element of cinema surround, the VOKAL centre speaker is key when it comes to clear and crisp movie dialogue and detail that doesn't get lost amongst the effects and incidental music of movie soundtracks. Also the component that handles the bulk of the action, choosing an effective centre channel speaker is essential to the whole home cinema experience. This is why we designed the VOKAL to be a fool-proof hit in any home, both in terms of performance and physicality.

Firstly, armed with our sublime 6½-inch wood-fibre, low-loss woofer, hybrid tweeter module and front-pointing bass port, you can be sure that the action on the screen in front of you is perfectly soundtracked, with deftly handled detail to draw you in. Secondly, with an eye on practicality, the OPTICON VOKAL has been designed to fit most types of Hi-Fi furniture, so it can be stowed neatly away when not in use – a plus point for aesthetically minded home owners and home cinema custom installers alike.

KEY SPECIFICATIONS

- DALI SMC Magnet System Technology
- Centre speaker
- Hybrid tweeter module
- 6½-inch wood fibre low-loss woofer
- Front pointing bass port
- Gold-plated terminals



“ WE WANT PEOPLE TO HEAR THE ENERGY OF OUR LIVE SHOWS ON OUR ALBUMS. FOR THAT YOU NEED LOUDSPEAKERS BUILT BY PEOPLE WHO UNDERSTAND, AND ARE PASSIONATE ABOUT, MUSIC ”

—
LUKAS GRAHAM



Lukas Graham

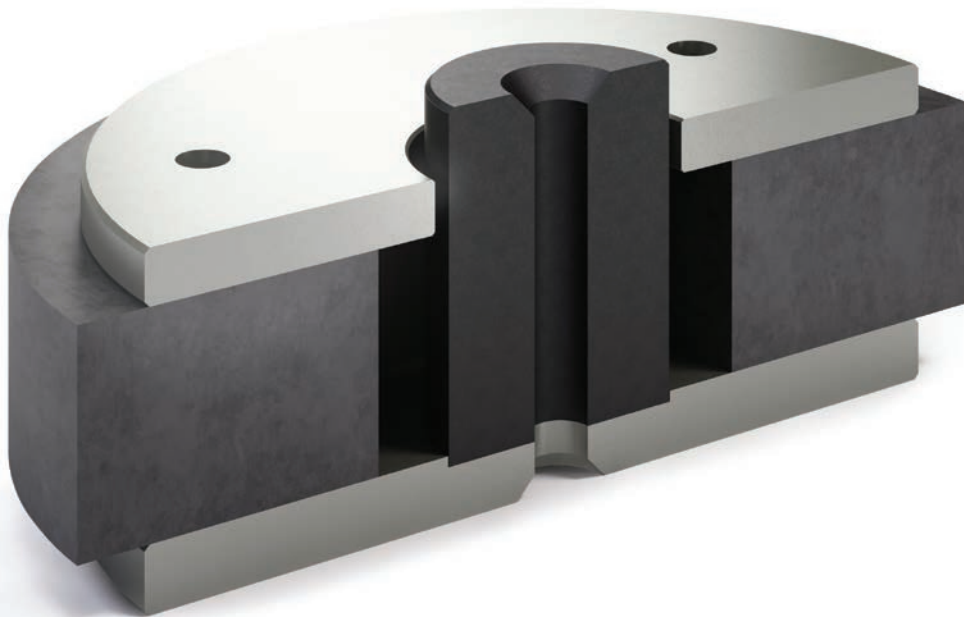
FEATURED ARTIST

LUKAS GRAHAM - Blessed with a stylish sense of pop-soul that sets dance floors alight, the cool dynamics of DALI's fellow Danes has propelled the four-strong band from debuting in 2012 to becoming one of Denmark's most beloved live acts by 2015.

DALI TECHNOLOGY

Here at DALI we like to lead the way when it comes to innovation in audio, which is why every new loudspeaker we produce is a fusion of both known and new technology, building on that which has gone before, taking the best elements of the existing, making them even better and mixing them with entirely new ideas that we've pioneered. The OPTICON range is a result of that ethos.

All models in the OPTICON series have an SMC-based magnet motor system driving the lightweight wood fibre cone, working in perfect synergy with the unique hybrid tweeter module and individual bass reflex ports for each woofer to produce audio exactly as the recording artist originally envisioned it.



THE CABINET

The OPTICON series is manufactured at our state-of-the-art woodworking facility in Denmark that handles everything from cutting out the Medium Density Fibre board (MDF) cabinet to applying the vinyl. The mounting of drivers and final tests and approvals on each and every loudspeaker are also handled directly at our own assembly lines in our Danish factory.

Styled with clean lines for a contemporary edge, the whole range comes in a choice of Silk Matte White, Black and Walnut finishes with a High-Gloss White of Black front baffle.

TECHNICAL SPECIFICATIONS

	OPTICON 1	OPTICON 2	OPTICON 5	OPTICON 6	OPTICON 8	OPTICON LCR	OPTICON VOKAL
Frequency Range [+/- 3] dB [Hz]	62 - 26,500	59 - 27,000	51 - 32,000	49 - 32,000	38 - 32,000	72 - 32,000	47 - 32,000
Sensitivity [2.83V/1m] [dB]	86	87	88	89	88	90.5	89.5
Nominal Impedance [ohms]	4	4	4	4	4	4	4
Maximum SPL [dB]	105	107	107	110	112	109	109
Recommended Amp. Power [Watt]	25 - 100	30 - 150	30 - 150	25 - 200	40 - 300	30 - 150	30 - 150
Crossover Frequency [Hz]	2,000	2,000	2,400 / 14,000	800 / 2,200 / 14,000	390 / 2,300 / 14,000	2,200 / 14,000	2,300 / 14,000
Crossover Principle	2-way	2-way	2 + ½-way	2½ + ½-way	3 + ½-way	2 + ½-way	2 + ½-way
High Frequency Driver	1 x 26 mm soft dome	1 x 28 mm soft dome	1 x 28 mm soft dome 1 x 17 x 45 mm ribbon	1 x 28 mm soft dome 1 x 17 x 45 mm ribbon	1 x 28 mm soft dome 1 x 17 x 45 mm ribbon	1 x 28 mm soft dome 1 x 17 x 45 mm ribbon	1 x 28 mm soft dome 1 x 17 x 45 mm ribbon
Low Frequency / mid-range Driver(s)	1 x 4¾"	1 x 6½"	1 x 6½"	2 x 6½"	2 x 8" / 1 x 6½"	1 x 6½"	1 x 6½"
Enclosure Type	Bass reflex	Bass reflex	Bass reflex	Bass reflex	Bass reflex (mid-range closed box)	Bass reflex	Bass reflex
Bass Reflex Tuning Frequency [Hz]	61.5	46.5	43.0	42.0	29.5	45.5	43.5
Connection Input(s)	Single	Single	Bi-wire / Bi-Amp	Bi-wire / Bi-Amp	Bi-wire / Bi-Amp	Single	Single
Recommended Placement	Stand/Shelf/Wall	Stand/Shelf	Floor	Floor	Floor	On-wall/Shelf	Shelf
Recommended Distance from rear wall to speaker's rear side [cm]	2 – 80	10 – 80	20 – 80	20 – 100	30 – 150	0 - 10	0 - 30
Dimensions (H x W x D) [mm]	261 x 152 x 231	351 x 195 x 297	891 x 195 x 310	1001 x 195 x 330	1141 x 241 x 450	482 x 285 x 128	201 x 435 x 312
Dimensions (H x W x D) [inches]	10.4 x 6.1 x 9.2	14.0 x 7.8 x 11.9	35.6 x 7.8 x 12.4	40.0 x 7.8 x 13.2	45.6 x 9.6 x 18.0	19.3 x 11.4 x 5.1	8.0 x 17.4 x 17.5
Weight [kg/lb]	4.5 / 9.9	7.8 / 17.2	15.6 / 34.4	18.9 / 41.7	34.8 / 76.7	8.3 / 18.3	8.8 / 19.4
Accessories	Rubber feet, manual	Rubber feet, manual	Spike set, rubber feet, manual	Spike set, rubber feet, manual	Spike set, rubber feet, manual	Rubber feet, manual	Rubber feet, manual

D A L I O P T I C O N



AVAILABLE IN



BLACK ASH



SOFT SILK
MATTE WHITE



WALNUT



IN ADMIRATION OF MUSIC



www.dali-speakers.com
MADE IN DENMARK